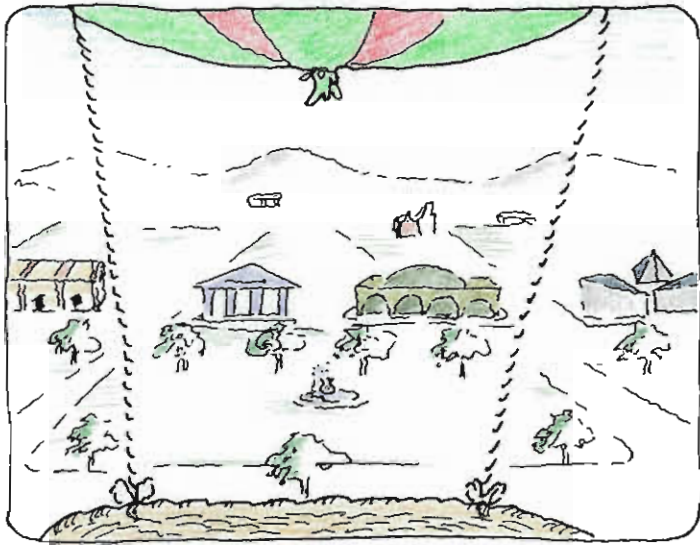
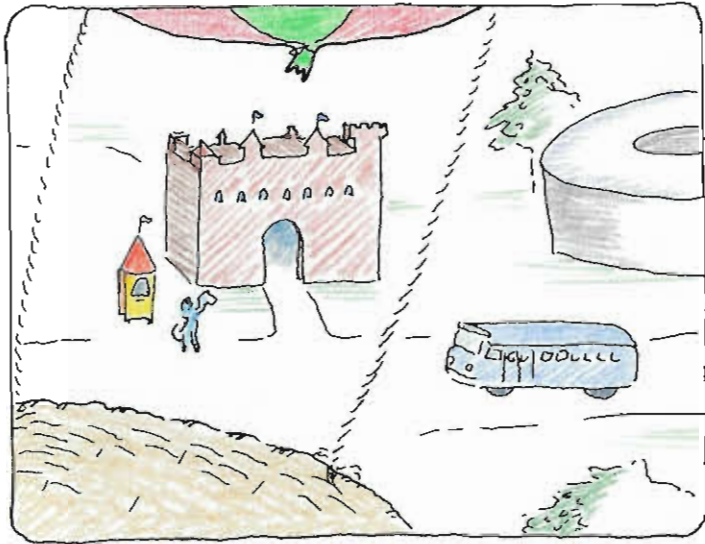


1. Attract Sequence



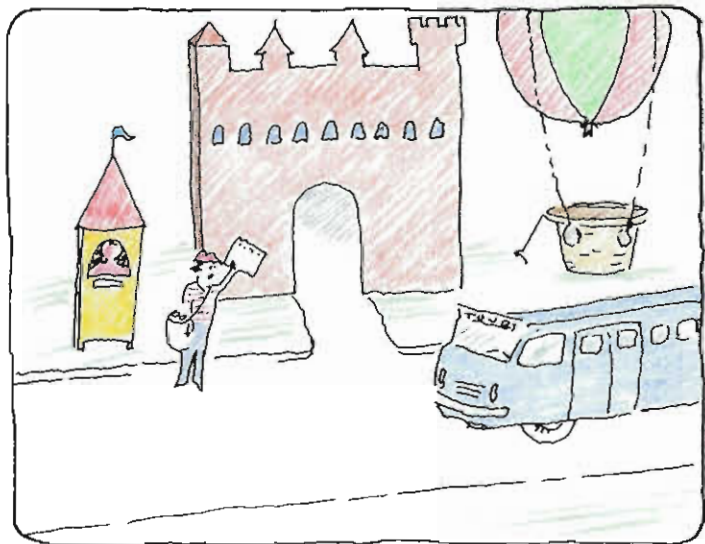
A view of the Mall (and beyond) showing the museums of the Smithsonian. This view is from a hot air balloon that is slowly revolving.

2. Program is initiated



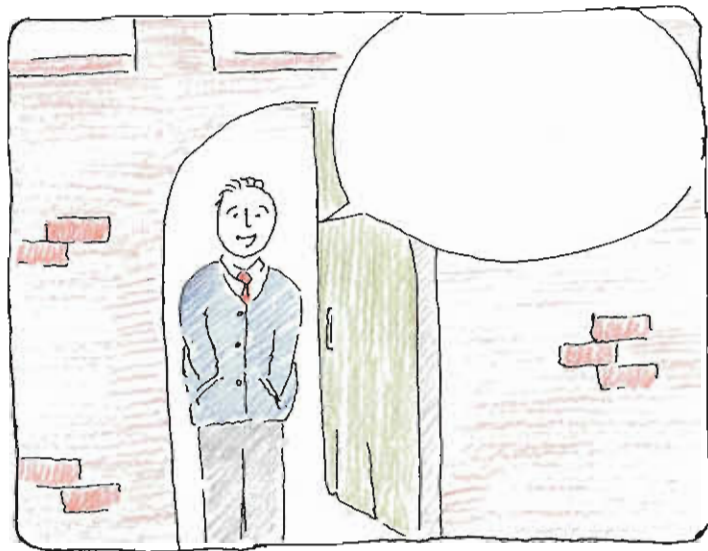
The balloon descends toward the Castle; "Main Menu" comes into view.

3. Main Menu



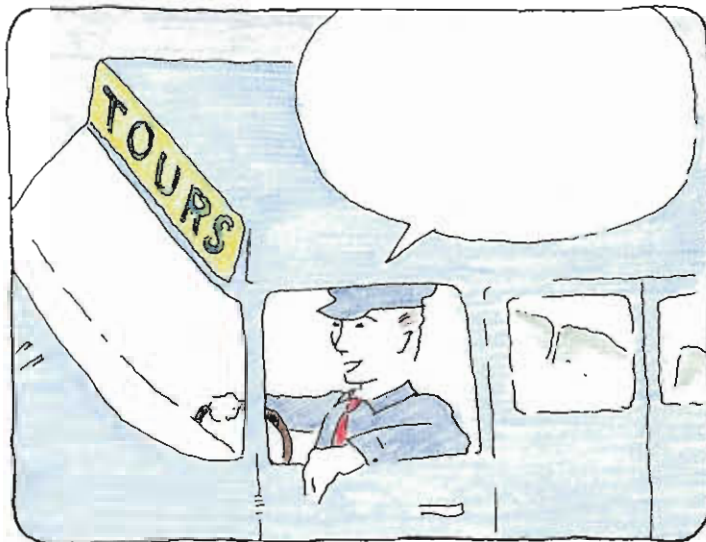
Main menu is four objects: Castle,
Tour Bus, "Look-it-up" Kiosk, and
Newsboy

4. Castle blurb



Balloon drifts past castle, user hears/reads about the options inside, meets Ted.

5. Tour blurb



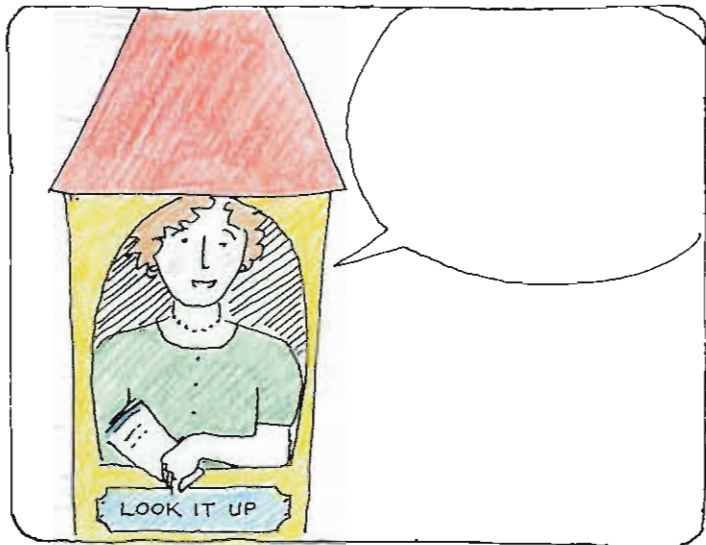
Balloon drifts past bus; driver describes bus tour mode.

6. Newsboy blurb



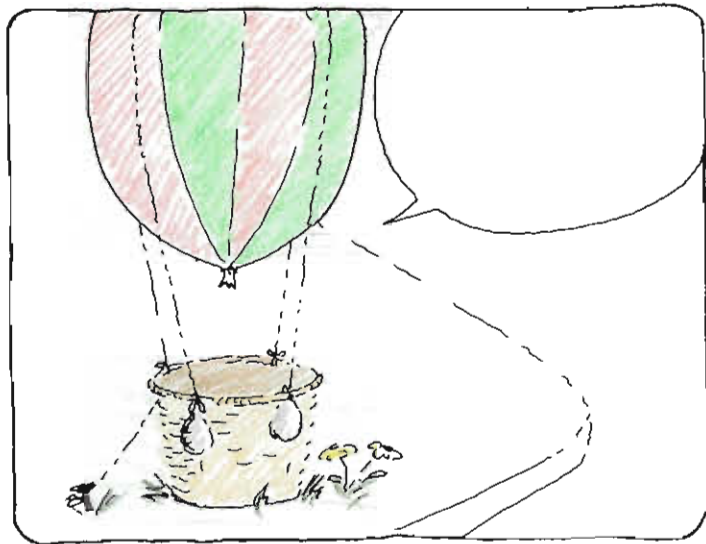
Balloon drifts past newsboy, he describes
timeline function.

7. "Look-it-up" Guide



Balloon drifts past "Look-it-up" guide;
she describes indexing function.

8. Balloon blurb



Balloon lands and describes museum function.

4a. Castle menu



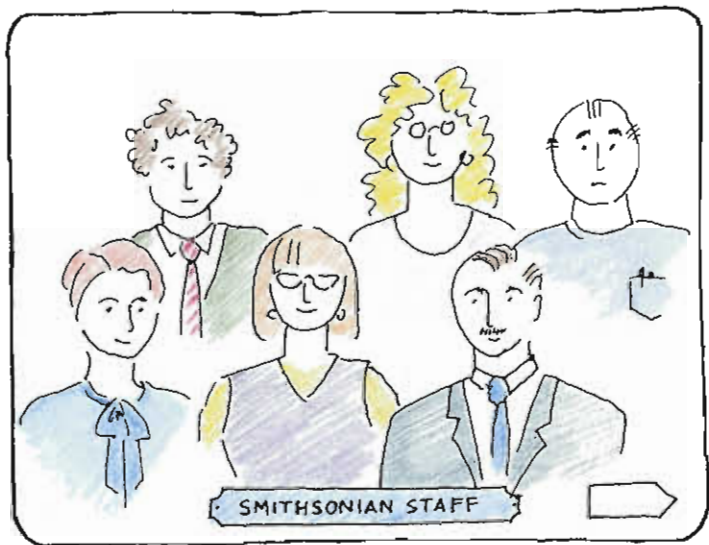
Inside the Castle Ted welcomes you,
and points out the three Castle options:
"About the Smithsonian", "Trivia" and
"Smithsonian Staff"

4b. About the Smithsonian



A stack of books about different aspects of the Smithsonian. Selecting a book opens a scrolling text box.

4c. Smithsonian Staff



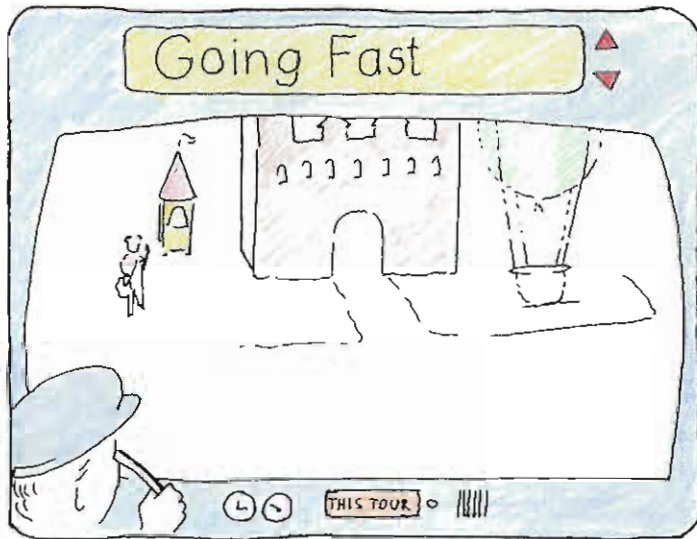
Five to seven Smithsonian staff members with nametags describing their position.

4d. Staffmember



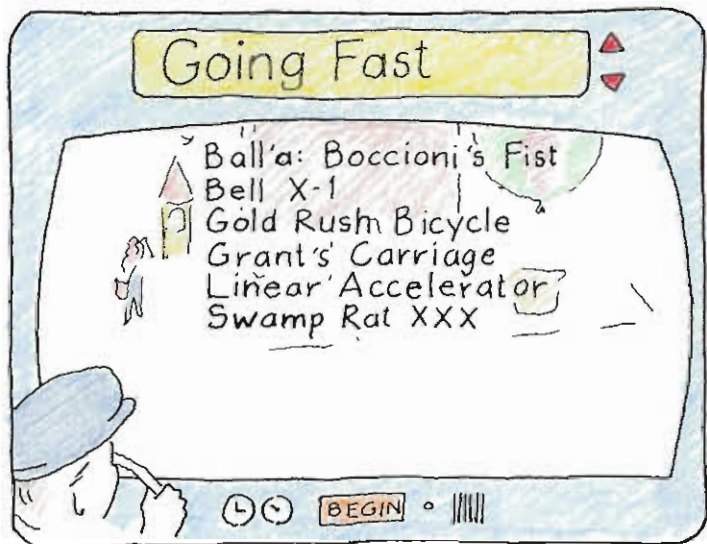
Curator, museum director, conservator,
perhaps Secretary of Smithsonian.
20 to 40 second audio comment with video
or still image behind speaker.

5a. Tour menu



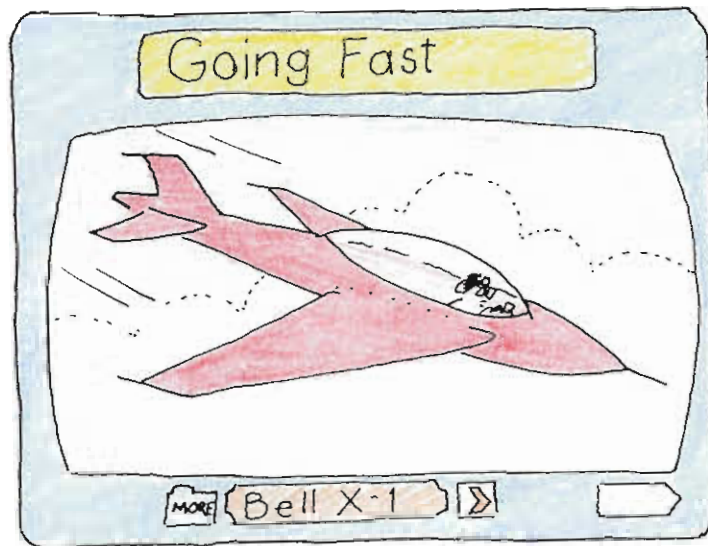
Inside bus, scrolling tour menu above windshield; a button labelled "this tour" selects a tour. "Main menu" choices still available through windshield.

5b. Tour selected



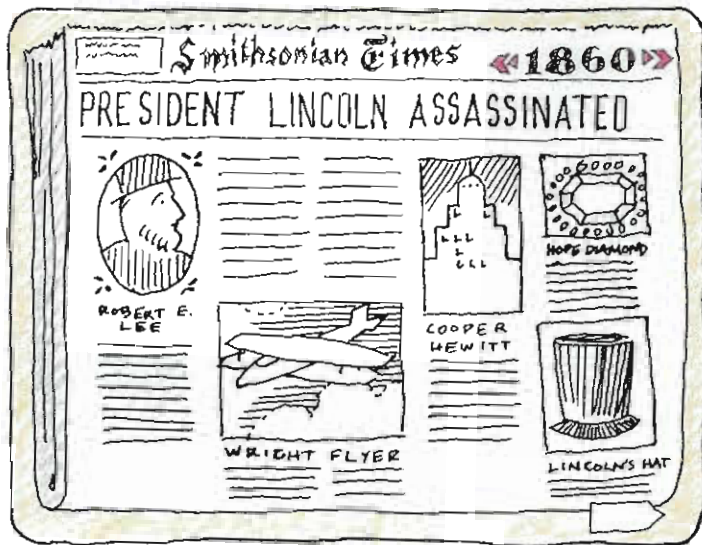
The list of treasures on the chosen tour is displayed; the "this tour" button changes to "begin".

5c. Tour initiated



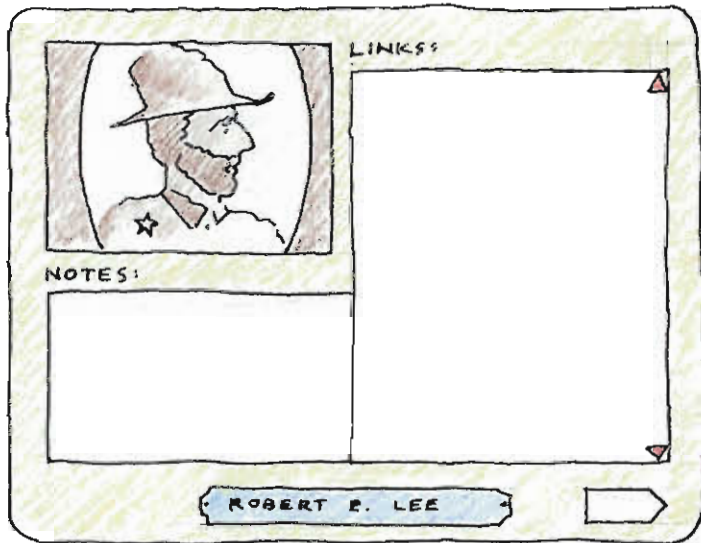
Treasure presentations appear through bus windshield. Tour name in same window as before, treasure name below, other functions same as Jim's previous design.

6a. Timeline



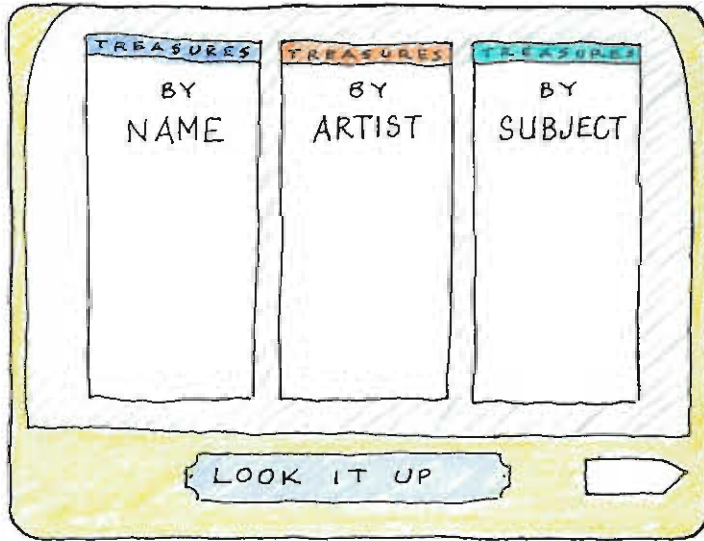
Newspaper--"Smithsonian Times"; the headlines set historical context. Date at the top by decades--this date is changeable by decade or by century. The images are of treasures from that decade; each image is labelled. Clicking on an image sends user to treasure's dossier.

6b. Treasure Dossier



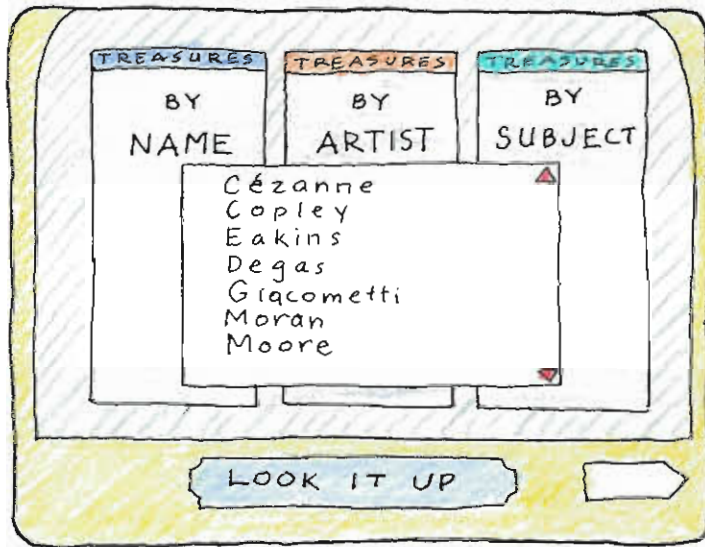
Clicking on a treasure's image in the newspaper brings user to that treasure's dossier.

7a. "Look-it-up" menu



Sort treasures by name, by artist, or by subject.

7b. "Look-it-up" sub menu



Scrolling sub-menus under each index category.

7c. Treasure dossier



Selecting a treasure from an index category brings you to a treasure's dossier.